

Compact Units for Grease

1-0016-US

NLGI Grade 000, 00

Group MKF – 0.1 or 0.2 l/min



MKF1-KW2-10...



MKF2-K3-20...



MKF2-K3-22...



MKF2-KW6-22...

These **MKF** compact units were developed to supply intermittently operated single-line central lubrication systems with lubricant. The basic model contains a gear pump with drive motor as well as the set of valves required for pressure relief and limitation (safety valve). The lubricant reservoir material is plastic.

The units are controlled depending on their design

- by hand (unit with pushbutton DK),
- by an external control system
- by a built-in electronic control and monitoring unit timer or counter with adjustable interval and monitoring time.

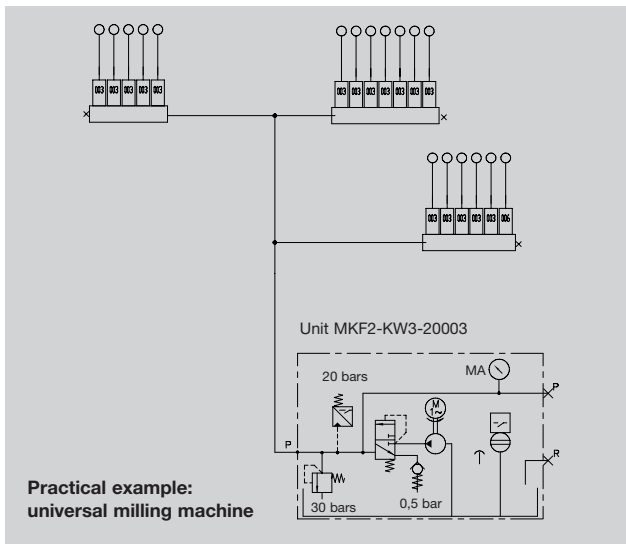
The control and monitoring unit is either a **timer for time-dependent control** or a **counter for load-dependent control**.

Special features:

- preliminary lubrication (lubrication after the supply voltage is turned on)
- pump delay time
- pressure dependent cut-off
- monitoring of pressure build-up
- monitoring of pump running time

Possible monitoring elements:

- **Pressure switch (DS)**
monitors the automatic pressure build-up.
- **Level indicator (WS)**
- **Pressure gauge (MA)**
displays the pressure response in the main line.
- **Monitoring contact (d2)**
turns off machine if pressure fails to build up.
- **Indicator light, green (SL1)**
shows that pump is running
- **Indicator light, red (SL2)**
indicates a fault if pressure fails to build up or if there is a low level of lubricant in the reservoir (only with built-in level indicator).



www.vogelag.com



Order No.	Delivery rate [l/min]	Reservoir capacity [l]	manual/ external	Control		Components				Hydraulic layout	Wiring diagram	Drawing
				IG38-3	IZ38-3	DK	DS	WS	MA			
MKF1-K2-10000	0.1	1.8	external							1	1	1
MKF1-K2-10001	0.1	1.8	external				●			1	1	1
MKF1-K2-10003	0.1	1.8	external						●	1	1	1
MKF1-KW2-10000	0.1	1.8	external					●		1	1	1
MKF1-KW2-10001	0.1	1.8	external				●	●		1	1	1
MKF1-KW2-10003	0.1	1.8	external					●	●	1	1	1
MKF1-KW2-10004	0.1	1.8	external				●	●	●	1	1	1
MKF2-K3-22005	0.2	3		●		●	●			2	3	3
MKF2-K3-22015	0.2	3			●	●	●			2	3	3
MKF2-K3-22016	0.2	3			●	●	●		●	2	3	3
MKF2-KW3-20001	0.2	3	●			●	●	●		2	2	2
MKF2-KW3-20003	0.2	3	●			●	●	●	●	2	2	2
MKF2-KW3-20004	0.2	3	●			●		●	●	2	2	2
MKF2-KW3-20005	0.2	3	●			●		●		2	2	2
MKF2-KW3-22003	0.2	3		●		●	●	●	●	2	3	3
MKF2-KW3-22013	0.2	3			●	●	●	●	●	2	3	3
MKF2-KW6-20003	0.2	6	●			●	●	●	●	2	2	4
MKF2-KW6-22001	0.2	6		●		●	●	●		2	3	5
MKF2-KW6-22003	0.2	6		●		●	●	●	●	2	3	5

Reservoir material: plastic

● = components contained in the unit. **DK** = pushbutton / **DS** = pressure switch / **WS** = level indicator / **MA** = pressure gauge

Notice!

All products from Willy Vogel AG may be used only for their intended purpose and in accordance with the information contained in the operating instructions belonging to the respective equipment.

In particular, we call your attention to the fact that hazardous materials of any kind, especially the materials classified as hazardous by

EC Directive 67/548/EEC, Article 2, Par. 2, may only be filled into VOGEL central lubrication systems and components and delivered and/or distributed with the same after consultation with and written approval from Willy Vogel AG.

See operating instruction 951-130-172.

Technical data

Gear pump unit

Flow rate at 50 Hz	0.1 or 0.2 l/min
at 60 Hz	0.12 or 0.24 l/min
	at a back pressure of $p = 5$ bars
Operating pressure	30 ± 1 bars
	corresponds to actual value of built-in safety valve
Operating temperature	+10 to +40 °C
Reservoir capacity	nominal 1.8, 3 or 6 l
Reservoir material	plastic
Type of enclosure	IP 54
Frequency/voltage	50/60 Hz, 115 V AC or
	50/60 Hz, 230 V AC
	please indicate when ordering

Medium grease, NLGI grade 000, 00
compatible with plastics, NBR elastomers,
copper, copper alloys

Please note: Only use grease that has been approved by Willy Vogel AG.

Approved lubricants list see "www.vogelag.com" or
please request from "„info@vogel-berlin.de".

Motor with built-in thermostatic switch

Mode of operation	S3, 20% (1.25 to 25 min) duty cycle ¹⁾
Power consumption approx.	50 Hz: 115 W; 60 Hz: 140 W
Speed	50 Hz: 2700 rpm; 60 Hz: 3300 rpm

Level indicator

Function	opens in event of low lubricant (PNP)
Voltage range	10...65 V DC
Continuous current	≤ 200 mA
Natural current consumption	6...12 mA

Pressure switch

Type of contacts	NO-contact
Max. switching voltage	42 V AC
Max. switching current	2.5 A (ohmic load)
Max. contact rating	30 VA ²⁾

Switching pressure 20 bars

¹⁾ The 20% duty cycle is the ratio of the pump running time to the subsequent idle time

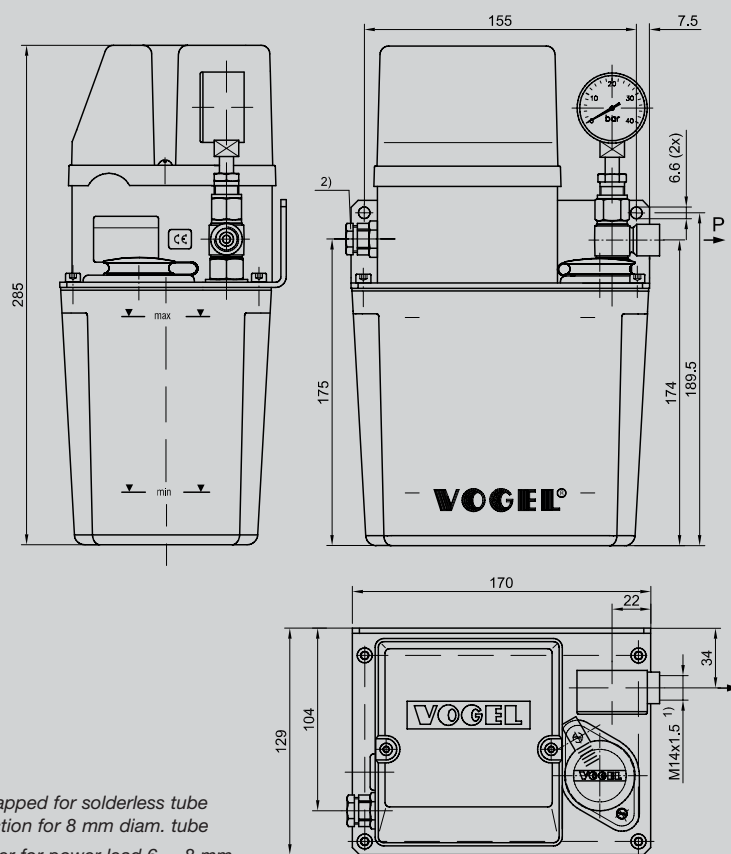
Example:

1 minute of pump running time requires at least 5 minutes of idle time.

The maximum permissible pump running time amounts to 3 minutes.
That results in a necessary idle time of 15 minutes.

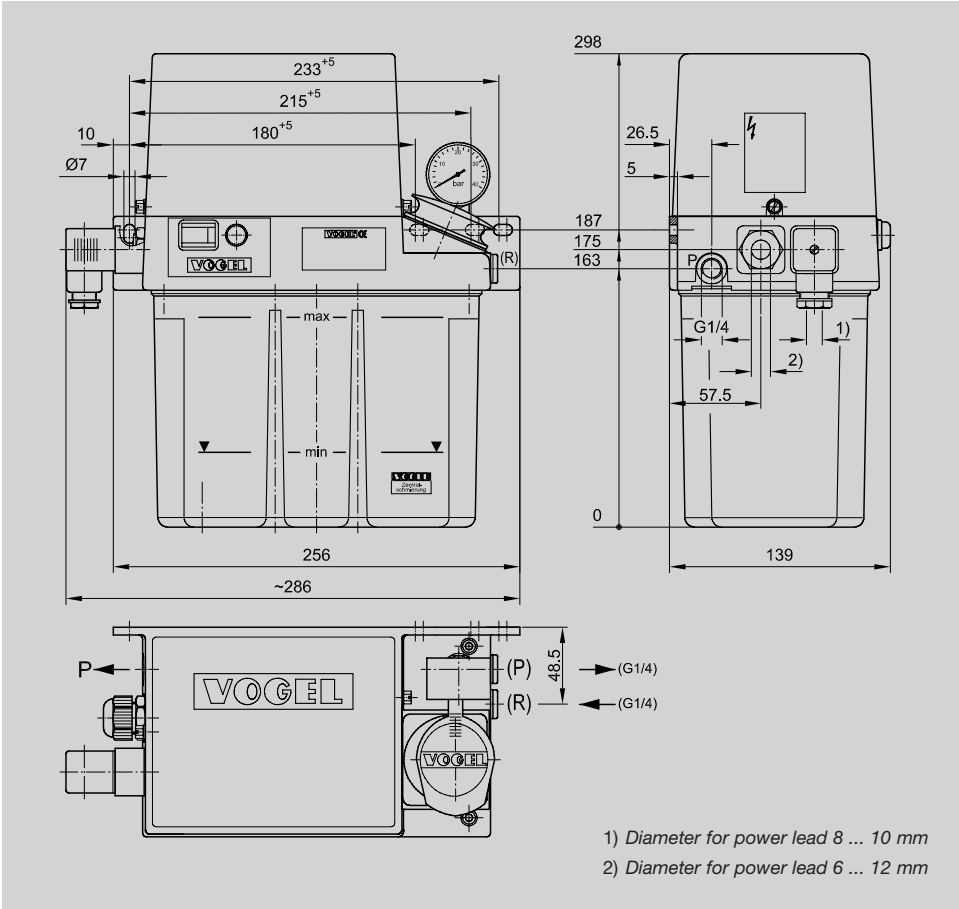
²⁾ Take appropriate measures to protect contacts when switching inductive loads.

MKF1-K(W)2-10...



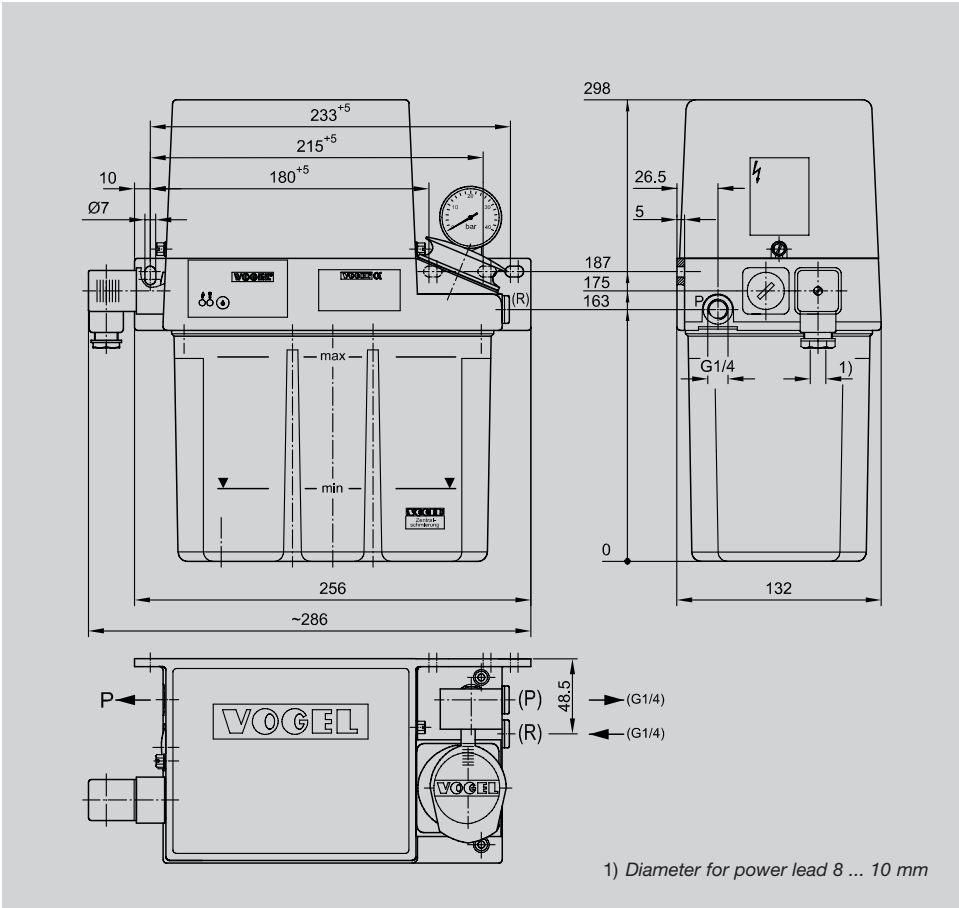
Drawing 1

MKF2-K(W)3-20...



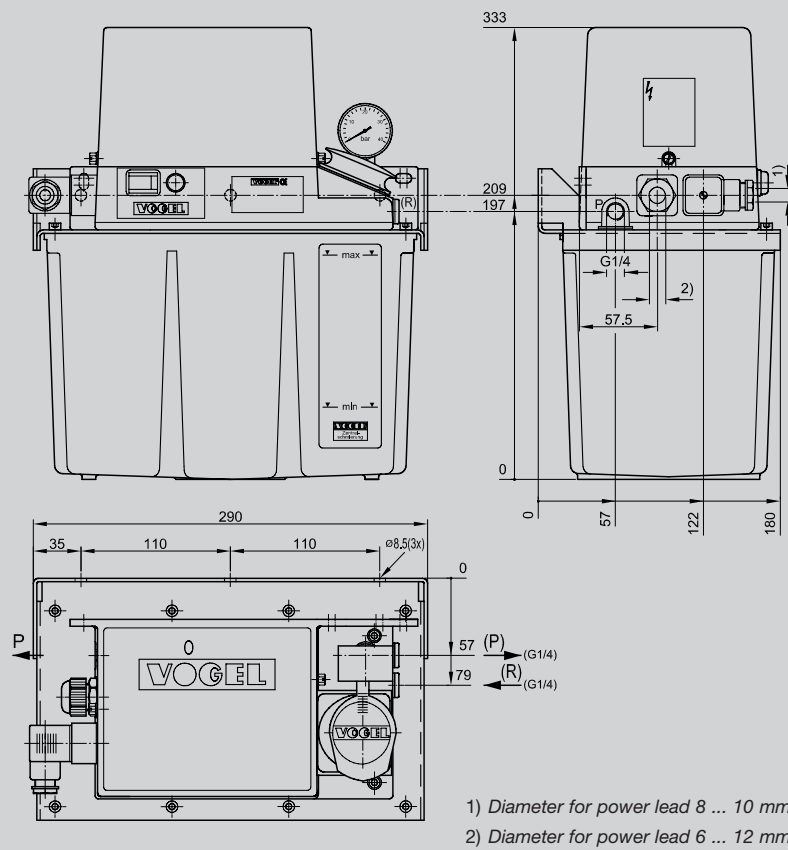
Drawing 2

MKF2-K(W)3-22...

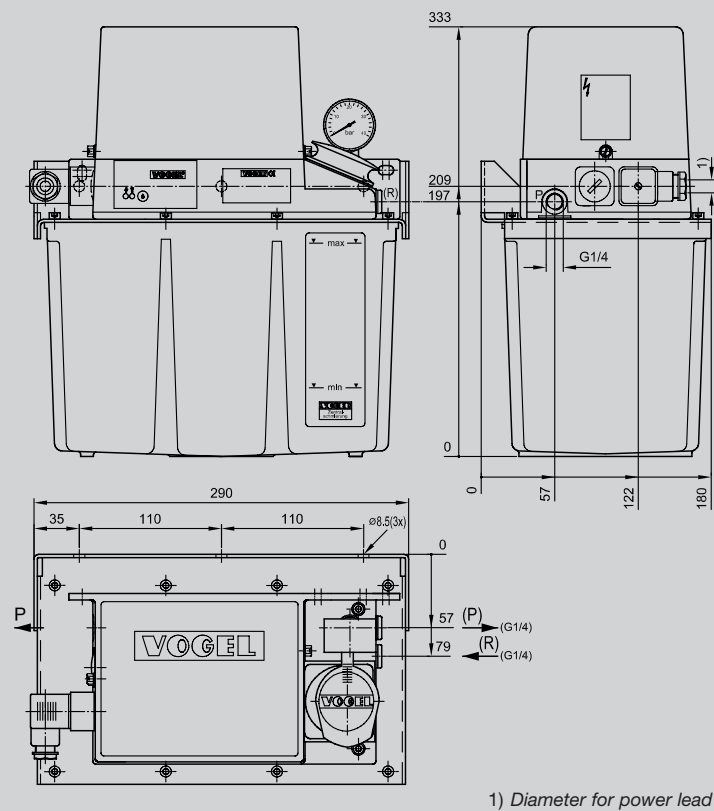


Drawing 3

MKF2-KW6-20...

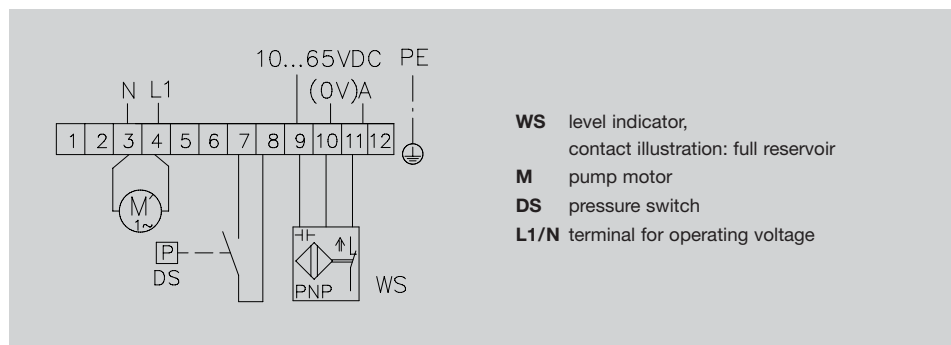


Drawing 4

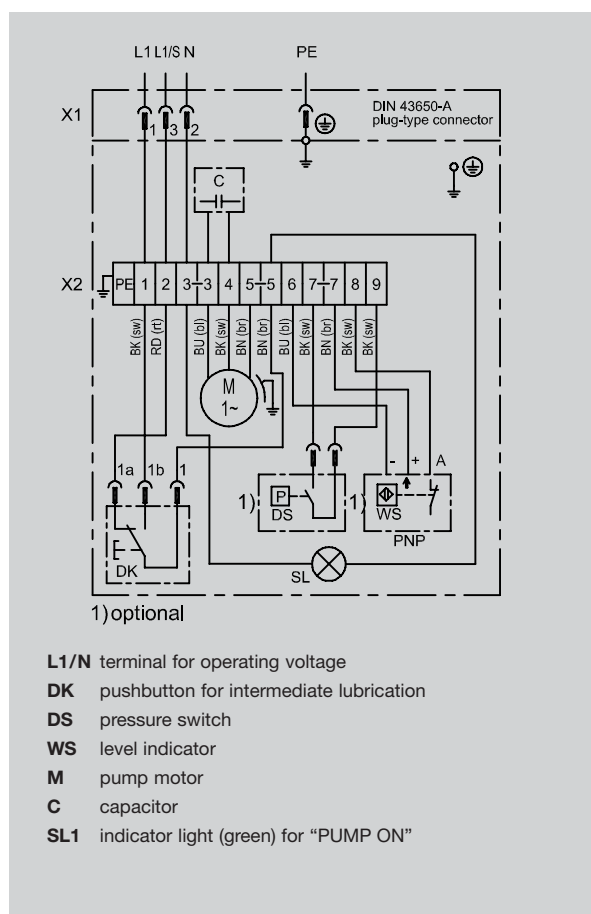
MKF2-KW6-22...

Drawing 5

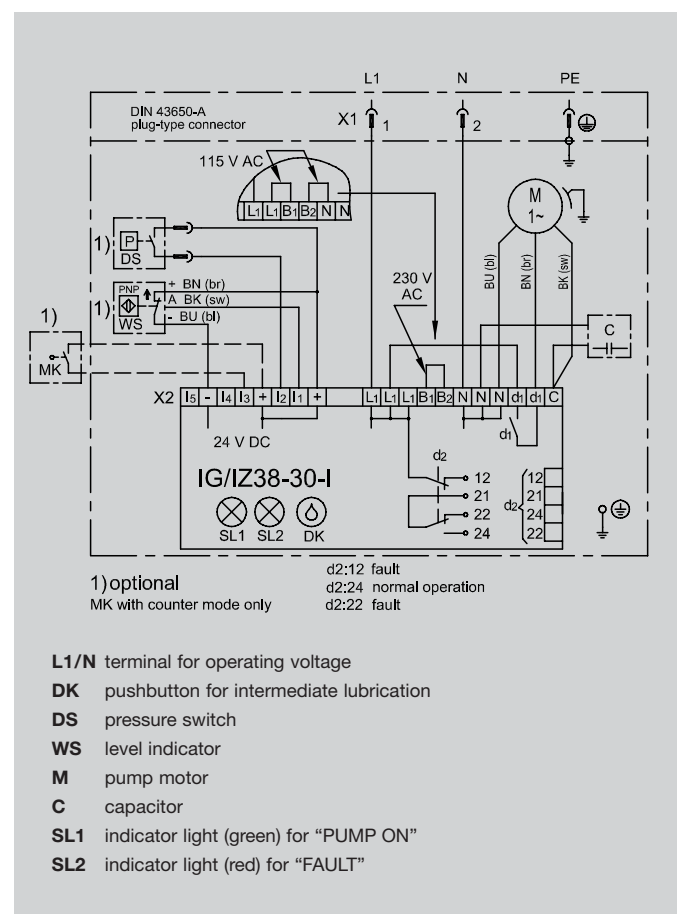
Wiring diagram 1



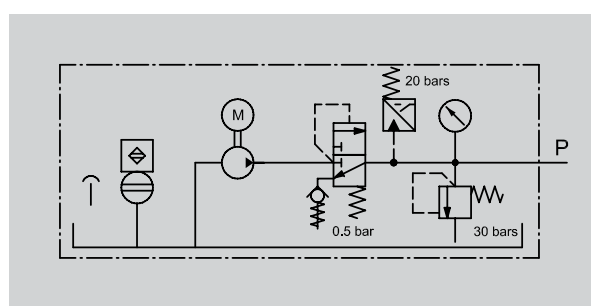
Wiring diagram 2



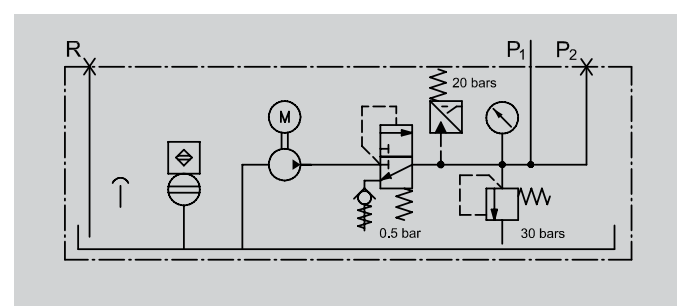
Wiring diagram 3



Hydraulic layout 1



Hydraulic layout 2



Control unit

The compact units with 3- or 6-liter reservoirs may be equipped with an electronic control unit for intermittently operated single-line central lubrication systems. Optionally with

- **IG38-30-I** for time-dependent control
- **IZ38-30-I** for load-dependent control

The units conform to the following directives:

Electromagnetic compatibility 89/336/EWG; 91/31/EWG
Low voltage directive 73/23/EWG; 93/68/EWG

Functions

- **IG38-30-I: timer** mode (time-dependent)
- **IZ38-30-I: counter** mode (load-dependent)
- Preliminary lubrication (lubrication after the supply voltage is switched on)
- Pump delay time
- Monitoring of pressure build-up
- Monitoring of pump runtime limitation
- Monitoring of lubricant level with wire-break detection (level indicator opens if lubricant level is critical)
- Terminal [-] permits operation with three-wire proximity switch.

Technical data

Interval duration preselectable in 12 stages:
IG38-30-I (min) { 1; 2; 4; 8; 16; 32; 64; 128;
IZ38-30-I (pulses) 256; 512; 1024; 2048
Pump delay time, nonadjustable 15 s
Pump runtime limitation, nonadjustable 60 s
Rated voltage 115 or 230 V AC
Rated frequency 50/60 Hz
Design board-mounted

Leaflet information

1-1203-US Compact Units for Oil

1-1700-1-US Control Units



WILLY VOGEL AKTIENGESELLSCHAFT

Willy Vogel AG

Motzener Strasse 35/37

12277 Berlin, Germany

P.O. Box 97 04 44 · 12704 Berlin

Phone (++49) 30-7 20 02-0

Fax (++49) 30-7 20 02-111

E-mail info@vogel-berlin.de

Internet www.vogelag.com