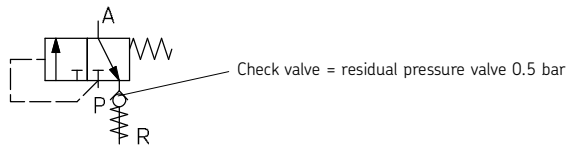


Relief valves

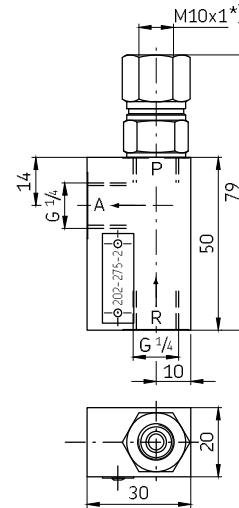
These valves are installed in distributor systems fitted with a pump without pressure relief equipment, mainly in the main line downstream from the pump.

With longer main lines and high viscosity oils, the pressure relief time, which influences the reversing of the distributors, can become too long. The installation of the second relief valve at a suitable position in the main line, e.g. at half the main line length, may remedy this problem..

Order No. 202-275-2



A = Outlet
P = Inlet
R = Return

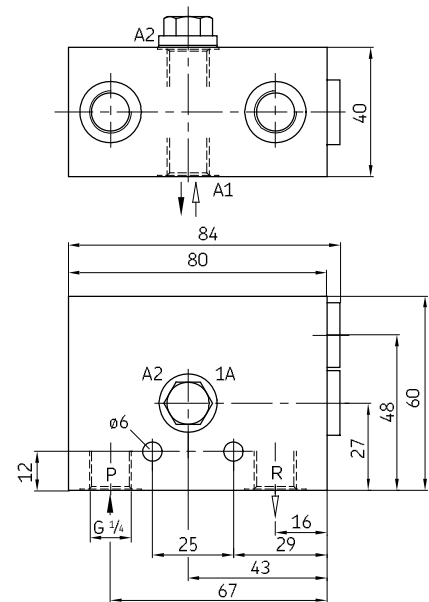
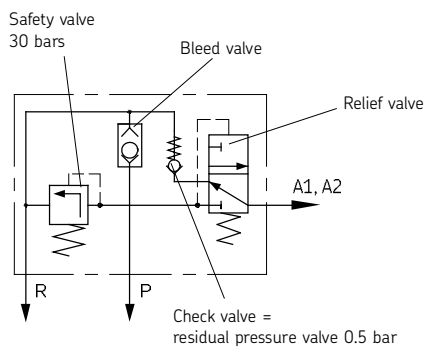
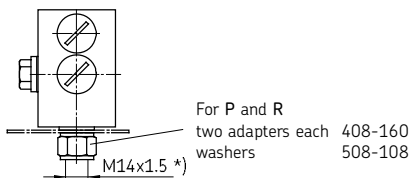


Relief valve with bleed valve and safety valve

Order No. 202-175-30

Adaptors ^{*)} for tube diam. 6: Order No. 406-054
for tube diam. 8: Order No. 301-020
for tube diam. 10: Order No. 410-163

Fitted to reservoir



^{*)} Ports tapped for solderless tube connection

Safety valves, adjustable (poppet valve)

Hydraulic characteristics

Order No.	Rated flow rate [l/min]	Adjustable pres. range [bar]	Operating pres. max. [bar]	Oil temperature max.	Viscosity range mm ² /s	Seal
WVN200-10E6		1 to 6	40			NBR
WVN200-10E12		3 to 12	40			NBR
WVN200-10E12-S8	see	3 to 12	40			FKM (FPM)
WVN200-10E25	pressure-	4 to 25	40	80 °C	20 to 1000	NBR
WVN200-10E25-S8	loss	4 to 25	40			FKM (FPM)
WVN200-10E35	parameter	4 to 35	40			NBR
WVN200-10E60		12 to 60	70			NBR
WVN200-10E60-S8		12 to 60	70			FKM (FPM)

General characteristics

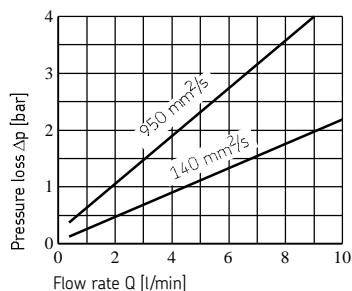
Design: poppet valve with hydraulic cushioning
directly controlled

Lubricant: oil

Connecting thread: G 1/4

Mounting position: optional

Pressure loss parameter



With increasing flow rate, the pressure upstream from the valve will also rise in accordance with the curves.

Adaptors *)

for valves **WVN200-10E6 to WVN200-10E35**

for tube diam. 8: Order No. 301-020

for tube diam. 10: Order No. 410-163

for tube diam. 12: Order No. 412-163

Washer: Order No. 508-108

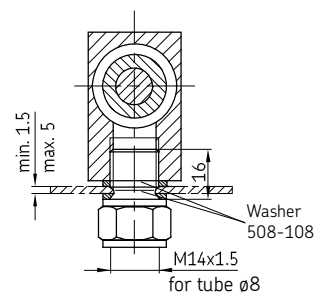
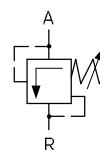
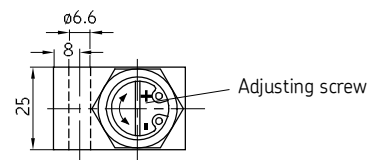
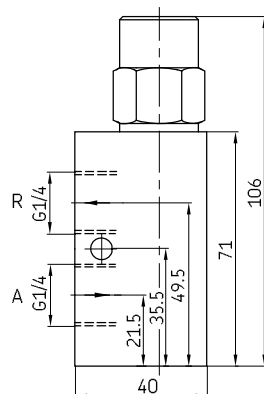
for valve **WVN200-10E60**

for tube diam. 8: Order No. 408-403W

for tube diam. 10: Order No. 410-403W

Washer: Order No. 508-108

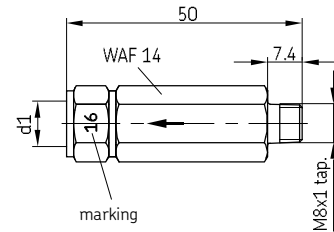
If installed on a reservoir,
use **two special adaptors 408-160**
with long tube ends.



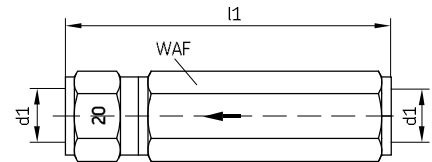
*) Ports tapped for solderless tube connection

Safety valves, (ball valves) for flow rates from 0.5 to 2 l/min

Order No.	Tube diam.	Opening pressure [bar]	Marking	d1 *)
WVN200-4A0.4	4	0.4	04	M8×1
WVN200-4A5		5	5	
WVN200-4A8		8	8	
WVN200-4A12		12	12	
WVN200-4A16		16	16	
WVN200-4A25		25	25	
WVN200-4A0.4-S1	6	0.4	04	M10×1

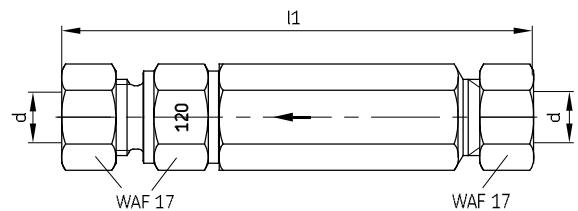


Order No.	Tube diam.	Opening pressure [bar]	Marking	d1 *)	l1	WAF
WVN200-6B0.5	6	0.5	05	M10×1	61	14
WVN200-6B3		3	3			
WVN200-6B8		8	8			
WVN200-6B12		12	12			
WVN200-6B16		16	16			
WVN200-6B20		20	20			
WVN200-6B40		40	40			
WVN200-8B0	8	0.04	0	M14×1.5	71	17
WVN200-8B3		3	3			
WVN200-8B5		5	5			
WVN200-8B12		12	12			
WVN200-8B16		16	16			
WVN200-8B20		20	20			
WVN200-8B32		32	32			
WVN200-10B0	10	0.04	0	M16×1.5	80	19
WVN200-10B0.5		0.5	05			
WVN200-10B1		12	12			
WVN200-10B32		32	32			
161-212-054 ¹⁾	8	20	20	M14×1.5	84.5	17



¹⁾ This valve is designed as a plunger valve.
Because of this design it can also be used for regulating tasks,
whereas the ball valves should be used as safety valves.

Order No.	Tube diam. d	Opening pressure [bar]	Marking	l1
WVN200-8D50	8	50	50	84
WVN200-8D75		75	75	
WVN200-8D120		120	120	
WVN200-8D220		220	220	
WVN200-10D120-S1	10	120	120	87
WVN200-10D220-S1		220	220	



Cutting sleeve screw unions according to DIN 2353

*) Ports tapped for solderless tube connection